



Bribie Shavings

**PRESIDENT- John Dann, VICE-PRESIDENT – Peter Wood, SECRETARY – Carol Baker, TREASURER – Sue Bowen.
COMMITTEE – John Grubb; Gregory Ross; Deb Sibson; Danny Strong; Andrew Wilmot**

Bribie & District Woodcrafters Association Inc.

August 2025

www.bribiewoodies.org.au

Shavings contributions to neils.andersen1@gmail.com

Presidents Report - August 2025

July has been quite hectic for several of our members. Last month the Pyrography members demonstrated pyrography to the Neighborhood Centre and this month they are demonstrating Pyrography and Marquetry at the Matthew Flinders Art Show. Big thanks to these members.

The Bunnings BBQ was well supported, thank you. On the morning of the BBQ, we were advised that the normal 2 pm finish would be 4 pm. This did create several problems as this required more stock and members working longer hours. Due to running low on stock and lack of patronage we closed at 3 pm.

Remember we have another BBQ on 7th September, so please put your name on the sheet in the clean shed if you can help.

Our project team has been very busy this month.

Unfortunately, there has been no response from Moreton Bay City Council on the Disability Access Ramp or confirmation of facilities usage.

Best wishes to:

Kevin Boyle for a speedy recovery following a motor vehicle accident.

Kim Bowers making a steady recovery.

Arthur Horsfall who is about to undergo a hip replacement.

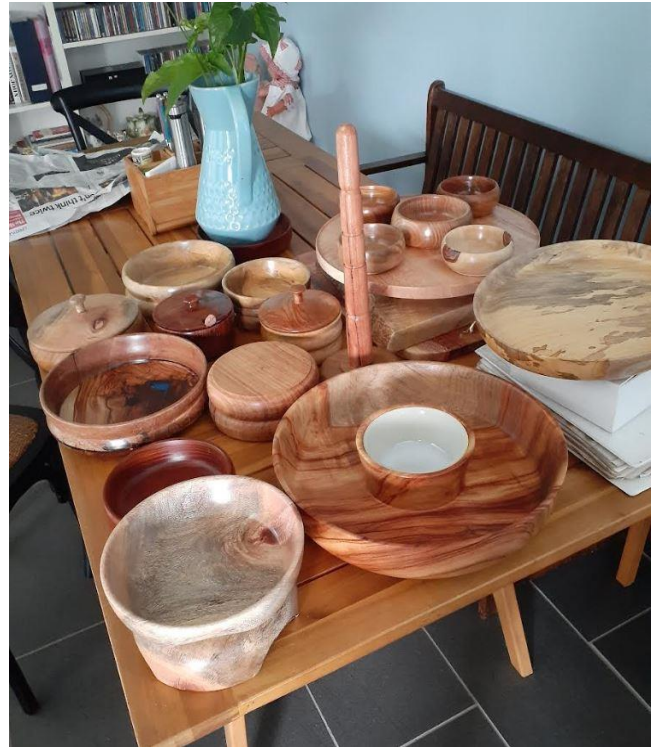
John Dann

President

Biggest Morning Tea

Brian Cole would like to thank everyone from the club for the blanks and pieces of timber donated.

These contributed to all the pieces below, that were donated to Qld Cancer Council's Biggest Morning Tea which raised over \$2000.



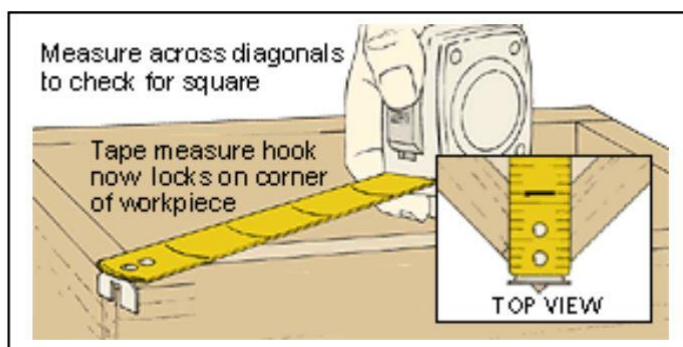
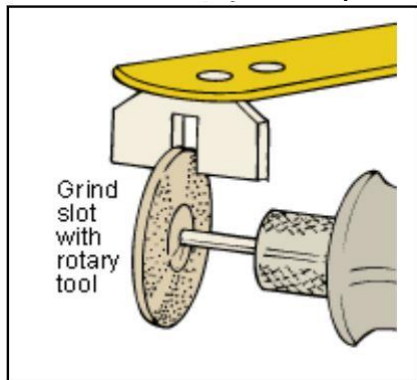
Woodies Management Committee

President:	John Dann 0415 237 167	president@bribiewoodies.org.au
Vice President:	Peter Wood 0484 340 984	peckonwood@gmail.com
Secretary:	Carol Baker 0434 334 592	secretary@bribiewoodies.org.au
Treasurer:	Sue Bowen 0414 293 446	treasurer@bribiewoodies.org.au
Committee	John Grubb 0417 635 093	jlgrubby1@bigpond.com
Committee	Gregory Ross 0407 144 517	rossanco@bigpond.net.au
Committee	Deb Sibson 0421 082 081	dsibbo77@hotmail.com
Committee	Danny Strong 07 3408 2820	d-istrong@iinet.net.au
Committee	Andrew Wilmot 0413 119 795	airedrew@gmail.com

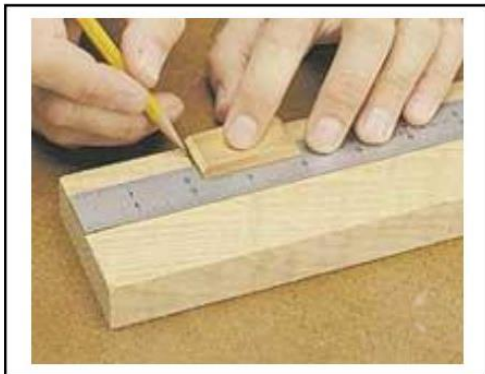
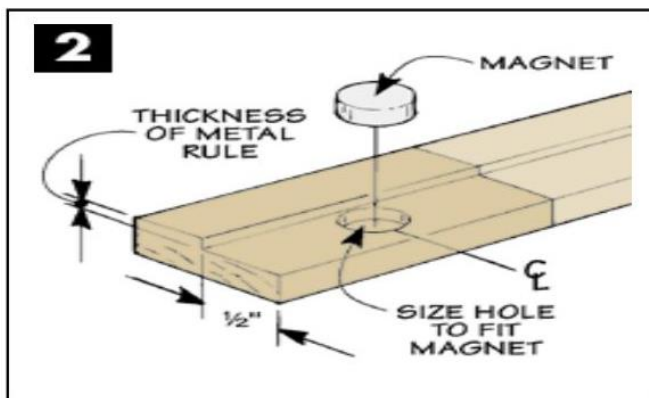
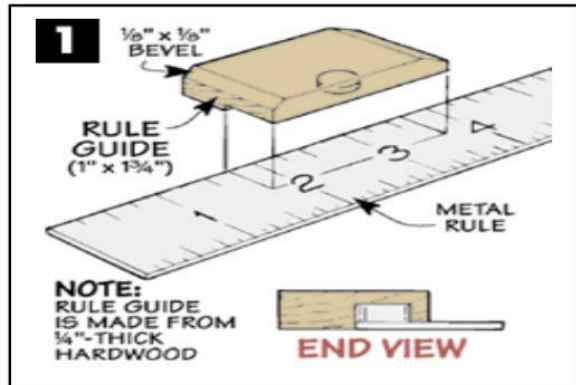
Kim's Krafty Korner

Measuring Diagonals Easily

The last step to assembling a case is to make sure it's square. And the quickest way to do this is to measure diagonally from corner to corner. (If it's square, these measurements will be the same. If not, you'll need to make adjustments.) Using a tape measure is an easy way to check for square. The problem is that keeping the end of the tape on the corners can be difficult. But with a quick modification to the hook of the tape you can solve this problem. To do this, simply cut a small slot on the hook with a rotary tool (or hack saw), see drawing below.



The slot slips over the point of the corner of the project- see the drawing and detail above. The slot holds the tape in place for those large projects where an extra set of hands would be a big help and it doesn't affect the tape measure's accuracy when I use it for other projects. To allow the rule guide to sit flat on a workpiece, the bottom edge is rabbeted to fit over the metal rule (Figure 1). Since the rule guide is fairly small, it's best to cut this rabbet in an extra-long piece (Figure 2).



Rule Guide

A metal rule is great for measuring, but it can be difficult to use for layout work. The problem is the thickness of the rule itself. It creates a "step" between the surface of the rule and the workpiece that can make transferring a mark less than accurate. My solution is the simple rule guide shown above. It's a small wood block that makes it easy to accurately lay out a line. You simply align the end of the block with the desired increment on the rule. Then mark the line, using the block as a guide. I also added a small magnet to hold the rule

guide in place, yet still allow it to slide along the metal rule. The magnet fits in a hole that's drilled in the rabbeted edge of the strip. After cutting the rule guide to length, it's just a matter of sanding a bevel on each end to ease the sharp edges and then gluing in the magnet. (I used epoxy.)

Box of the Month



This month we are featuring a Jewellery Box that I, Neils Andersen, made for a raffle prize during this year's Competition.

I made it from Silky Oak and Jacaranda. It is constructed with dovetail joints and has a lift out tray with ring bars. It is lined with felt and finished with hard wax wood oil.

The butterfly image on the lid was done by Deb Sibson.

If you would like to own this box, make sure you buy some raffle tickets.



From the Project Team

Here are some of the works the project team have done recently.



The table was for the Glass Group at the Arts Centre.



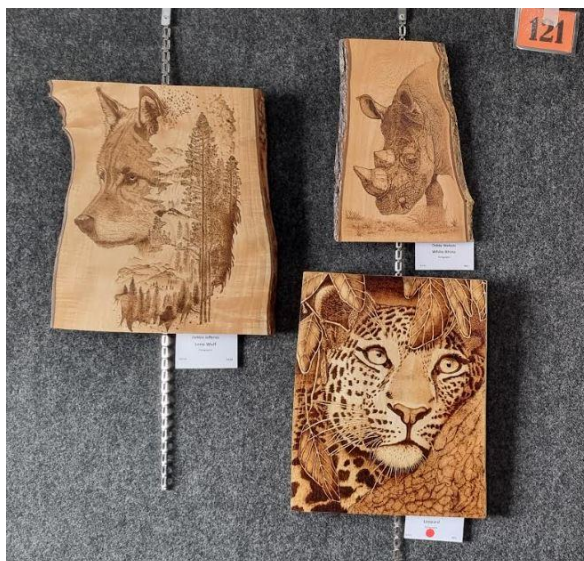
A couple of table tops waiting for the finish to dry. These were made to fit onto the top of old Singer Sewing Machine cabinets.

Also, John Tunks made a chess board for the club to sell on market day. This is the second chess board John has made for the club.



Pine Rivers Show

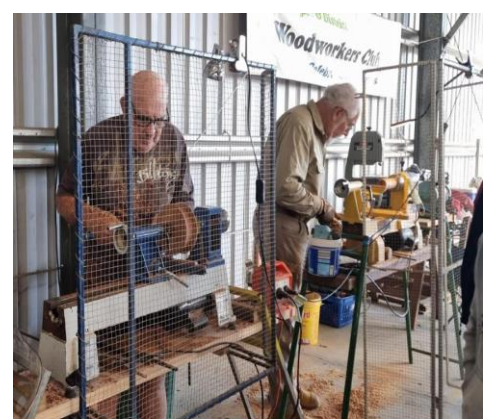
Below are some Woodwork items from the recent Pine Rivers Show



Gympie Heritage Makers Fair

It's a celebration of craftsmanship, an opportunity to meet the makers of heritage trades, woodwork, fibre and textile arts; a showcase of exceptional quilting and artisanal exhibits; non-stop demonstrations by artisans gathered together onsite.

A number of our members attended the fair and to all accounts had a great time. It would be good to see more artisans of other crafts in future events.



Date Savers August - September – October

Tuesday 5 th August 2025	New Member Orientation Day	8am
	First Aid Cabinet Awareness	9.30am
Tuesday 19 th August 2025	Committee Meeting	8am
Tuesday 26 th August 2025	General Meeting	9am
Sunday 31 st August 2025	Open Day	8am to 12.30pm
	Father's Day theme	
September 2025	Volunteer Roster in Trevor Peter's Clean Shed for our October Exhibition – Please put your name down to help with this important event	
Tuesday 2 nd September 2025	New Member Orientation Day	8am
	First Aid Cabinet Awareness	9.30am
Sunday 7 th September 2025	Bunnings BBQ	Roster in Trevor Peter's Clean Shed
Saturday 13 th September 2025	Open Day in conjunction with Gem Club Festival	
Tuesday 16 th September 2025	Committee Meeting	8am
Tuesday 23 rd September 2025	General Meeting	9am
Sunday 28 th September 2025	Open Day	8am to 12.30pm
Tuesday 7 th October 2025	New Member Orientation Day	8am
	First Aid Cabinet Awareness	9.30am
10 th & 11 th October 2025	Cooroora Wood Show at Cooroy.	
Tuesday 21 st October 2025	Committee meeting cancelled due to Exhibition at Matthew Flinders Art Gallery	
Sunday 26 th October 2025	Open Day – Held at Matthew Flinders Art Gallery	
Tuesday 28 th October 2025	General Meeting cancelled due to Exhibition at Matthew Flinders Art Gallery	
October 2025	Bribie Woodcrafters Competition & Exhibition	
	20th October to 2nd November 2025 Matthew Flinders Art Gallery	

Get your competition & exhibition items happening for this upcoming event. Information booklet sent to members, please print your copy. Entry forms and Flyers out soon & in Trevor Peter's Clean shed.

See important dates on Trevor Peter's notice board

Important Exhibition Dates - Check Information Package for full details	
Thursday 9th October	Competition / Exhibition / Sales <u>Entry Forms</u>
Monday 20th October	Lodgement
Tuesday 21st October	Gallery Set-up
Wednesday 22nd October	<u>Competition Entry Items</u> Delivered - 10am to 2pm
Thursday 23rd October	Competition Judging
Friday 24th October	<u>Exhibition / Sales Items</u> Delivered – 10am to 2pm
Sunday 2nd November	Members/Guests Preview – 3pm to 5pm
	Collect Items – 1pm to 2.30pm



Some Woodworking Humour

Why did the saw go to school? To improve its cutting-edge knowledge.

What's a woodworker's Favorite band? The Carpenters, of course!

Why did the hammer break up with the nail? It found someone better to hit on.

"Don't tell me how to work safely!
I've been at this job for over five
years!"



Shed Captains Roster

DUTY ROSTER **AUGUST**

Monday	4 th	John Arkinstall	0448 042 077
Thursday	7 th	Andrew Wilmott	0413 119 795
Monday	11 th	Jim Daley	0418 770 502
Thursday	14 th	Ian Trail	0401 134 384
Monday	18 th	Bruce Burt	0427 400 394
Thursday	21 st	John Westerhuis	0427 542 384
Monday	25 th	Ron Butterfield	0419 371 544
Thursday	28 th	John Grubb	0417 635 093

If you are unable to attend on your rostered day
please arrange your own swap