



# Bribie Shavings

**PRESIDENT- John Dann; VICE-PRESIDENT – Peter Wood; SECRETARY – Carol Baker; TREASURER – Lorelle Green  
COMMITTEE – Sue Bowen; John Grubb; John Westerhuis; Andrew Wilmot**

**Bribie & District Woodcrafters Association Inc.**

**December 2023 Newsletter.**

[www.bribiewoodies.org.au](http://www.bribiewoodies.org.au)

Shavings contributions to [anitamcd@bigpond.com](mailto:anitamcd@bigpond.com)

**A** busy two weeks of Exhibition, then it was all over bar the drawing of the raffle. The computerised raffle drawing system is the new way and just as it was done last year, 2022, with independent scrutineer Di Carr from BICAS, this year BICAS Manager Julie Thomson did the honours. Julie also drew the Lucky Door prize winner the old fashioned way.



1<sup>st</sup> prize of the coffee table was won by Rhonda Keane. Sadly there isn't a photo.



2<sup>nd</sup> prize won by Wendy Waggit of Newmarket.



3<sup>rd</sup> prize won by Reen Lunternen of Banksia Beach.



Lucky Door prize won by Robert Bignell of Stafford.

**Congratulations to all the winners and we hope you get enjoyment from your prizes.**

**Daily** activities resumed. The huge logs arrived and the **Outback Boys** dealt with them. These huge Bloodwood logs took some manoeuvring and we should all remember to thank these men for the work they do. How else would we have such lovely wood to work with? I was told that after cutting, the colour was some of the nicest the **Boys** had seen for a long time. Thanks to **Paul Soldatenko** for supplying these photos.



**Greg Ross** sent this photo of a Bribie Pine after reading last month's Shavings of Fred Marsland standing behind a large log.

Apparently this log, retrieved from the new day hospital, is larger and yes, Fred can just be seen at the end!

Thanks Greg and nice to know of another reader.

**So** it is little wonder that **Fred Marsland** was the worthy recipient of the "Woody of the Year" award. Fred is the "go to man" or "head honcho" at the **Outback Boys**.

He is always first to open at 6.30am on a Monday and Thursday in readiness for the day's work of cutting and man handling those logs.

I have it on good authority that he isn't getting any younger and there is a lot of hot, heavy work that goes on out there.

This is what surprise and disbelief looks like! When Fred heard his name called at the Presentation Dinner, he sounded like a broken record and got stuck on saying,

*"This is a joke!  
This is a joke!"*

But no, it wasn't a joke Fred.

**Congratulations  
Fred!**

**Enjoy your time  
in the limelight.**



**Thanks** to **Trev Spencer** who sent this interesting report after a recent trip to New Zealand.

*I came across this piece of wood in Awanui, New Zealand on a recent trip. I was impressed with the size and the amount of work that was done to make it into this staircase. The attached statistic sheet shows just how impressive this log of Kauri is.*

*Also attached are some examples of craftsmanship on display. For those who would like to attempt making some similar items, prices ranged from \$1,000 to \$5,000. The woodturner's name is Alby Hall if you would like to visit his web site.*

*The display was at 'Kauri Unearthed' in Awanui. Their web site is [www.ka-uri.com](http://www.ka-uri.com)*

*I was amazed at the quality of their products. **Trev Spencer.***



### THE GIANT KAURI STAIRCASE.

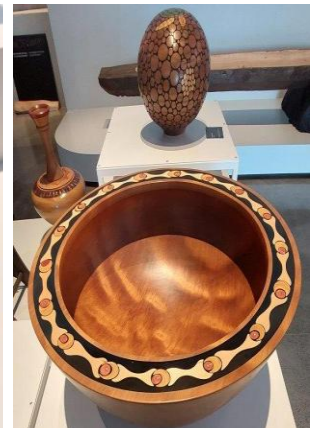
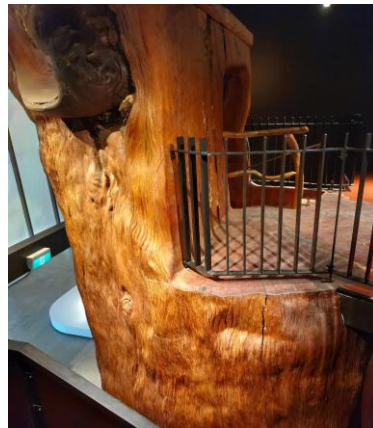
Dave Stewart and his crew extracted this log in October 1994 from a local farm. Radiocarbon dating has confirmed that this tree has been perfectly preserved in the swamp for 45,000-50,000 years. The tree lay at a 30 degree angle in the swamp with all the stump and roots having decayed away after time. The estimated weight of the tree was 140 tonnes.

The crew firstly tried to extract the tree in one piece, but after snapping two winch ropes with a breaking strain of 90 tonnes each and pulling apart 2 1/2-inch shackles, cut 110 tonne section off, pulling that out first and the remaining 30 tonne piece afterward. This is the largest swamp Kauri log known to have been extracted and because of this it was never milled.

Dave conceived the idea to create an internal stair case within the log as a centrepiece for a new shop. In September 1998, a 50 tonne section was cut from the monster log and transported to the site of the new shop.

A half metre thick reinforced concrete pad was poured, the log stood upright and construction of the shop commenced over and around it. The staircase itself took Dave 300 hours to chainsaw out and two other men an additional 200 hours to finish it. It is thought to be the only internal staircase in the world, if not definitely the oldest!

**Dimensions; Girth: 11.3m (37ft); Diameter: 3.6m (11ft 8in); Height: 5.1m (17ft); Growth: 1,087 years.**



### Kim's Krafty Korner Tips.



#### **Many of these Safety Tips Apply to ALL Power Tools.**

Continued from last month's tips.

**Use** a push stick to cut stock that is 6" or less in width. A hand that isn't close to a blade isn't going to get cut. Generally, a 6" minimum distance to the blade is considered safe, though some recommend 4".

**Use** a stop block when you crosscut short lengths. Mount a stop block on the fence. This can be as simple as a clamped on board that stops just before the saw blade so that cut-off pieces cannot bind between blade and fence.

**Position** your body so that it is **NOT** in line with the blade. This keeps sawdust feeding back through the slot of the blade out of your face and much more importantly, it keeps you out of the line of most kick-backs.

**Never** reach behind or over the blade unless it has stopped turning. Sometimes this looks safe. It almost never truly is. This does not mean you should stop pushing your work before it finishes passing through the blade, itself an invitation to kick back.

**Always** disconnect the power before changing the blade or performing any other maintenance operation. I like to drape the plug over my fence rail so I know in an instant that the saw is unplugged...or not.

**Make** sure that the blade has stopped turning before you adjust the table saw. The reasons are obvious. Making adjustments can get hands too close to the blade and even a slowly spinning blade has a multitude of sharp edges that can do damage.

**Always** make sure that the blade is turning free before you turn on the power. This is especially helpful after you make changes or adjustments. In other words, spin the blade without power a time or two to make sure there are no scraps or tools touching it.

**Keep** the tabletop smooth and polished. A dirty or rough table requires you to use more force to push the stock through the blade. It may also rust like crazy, further reducing the saw's effectiveness.

### **Maintenance Mutterings.** By **Kim Bowers.**

This month has been relatively better than average. We have actually had a few days when nothing has been broken. Bandsaw blades are still our major item requiring replacement. Whilst a few have failed at the weld most of them are operator error. Wednesday the 22<sup>nd</sup> November saw one of the 14" bandsaw blades twisted, rendering it useless and I would hope that the person responsible will put their hand up and pay the replacement costs. This person should be retrained as him/her obviously have no idea about proper operation.

There has been a "C spanner" to tighten or loosen the keyless chuck on the pedestal drill. The chuck tends to self tighten when using holesaws and forstner bits. Please ask if you are not sure how to use it.

I note while walking around the workshops some members are still attempting to flatten and straighten twisted timber without using the jointer. "Twisted in Twisted out". If your timber is wider than about 350mm it can be machined with a thicknesser but only after preparation with battens or wedges on a sled. Once again if you are not sure please ask.

Some of our maintenance done this month.

- Several bandsaw blades.

- Dropsaws and table saw blade replaced and sharpened.

- Dust extraction system upgraded plus six (6) vacuuming hoses fitted for your ease of cleanup.

- Sawstop cartridges replaced at a cost of about \$400.

- New tyres and two blades fitted to the bandsaw in the RM shed. This bandsaw is set for cutting circles with the jig. Do **NOT** attempt to use unless you have had instruction and a demo by Paul Gadsby.

- Lots of minor maintenance and cleaning by Chester and Paul.

Finally have a great and healthy holiday season and I will look forward to catching up after the festivities.

**Cheers Kim, Paul, Chester.**

### **VALE: Fred Meyer.**



It is with sadness we bid farewell to Fred. Fred was born on 30<sup>th</sup> September 1931. Though not a founding member, Fred joined the club in 2001 and does have the **Fred Meyer Compound** named after him. When you go out the back searching for that special piece of timber that is where you will find it.

Fred was a Life Member and active with the Project Team.

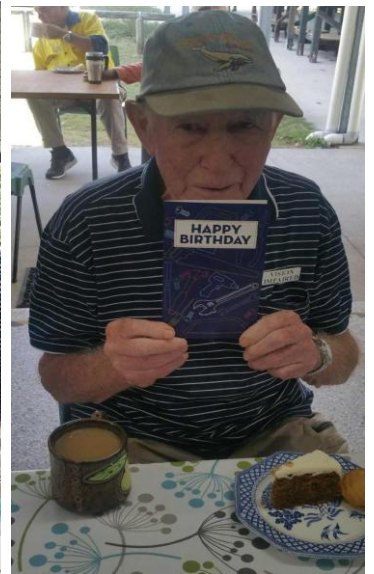
Fred and wife Angela joined in all the social events and were well known by the

long time members. This photo was taken at the club Christmas party in December 2017. George Hurlstone (another old member) was playing Santa on the day.

Sadly Angela passed away not long after that party and as Fred had low vision from Macular degeneration he wasn't around the club that often after that. Later Fred developed dementia and spent his last days at Foley Street Aged Care.

Fred passed away on Saturday 11<sup>th</sup> November 2023.

While Fred was still visiting the club he won a raffle prize that he was very happy about. He also managed to have a small celebration with the Woodies on his 89<sup>th</sup> birthday. Rest in Peace dear friend.



### **Welcome to Our New Members.**

Welcome to new members **Rob Guenole, Keith Mc Connell, Jason Dingli, Fred Vanstyn, Cliff Linsdell, Roz Holt, Kay Pilcher and Dave Smith.**

We hope you enjoy your time at the club.

**All members**, new and old are encouraged to attend the monthly meetings and be prepared to volunteer for anything that benefits the club.

**Like all clubs you only get as much from it as you are prepared to put into it.**

### **Orientation Day Reminder.**

Orientation for new members is conducted on the 1<sup>st</sup> Tuesday of each month commencing at 8.00am.

**Next orientation day will be Tuesday 5<sup>th</sup> December 2023.**

Following Orientation, **John Dann** will do the First Aid familiarization course for new members.



## **Words from your President.**

The past month has been very busy with the Exhibition / Competition and Presentation Dinner along with MBRC requests for documentation from many years ago (2014 forward)

I must thank all members for the assistance that was received in ensuing that the Exhibition was a great success

A lot of lessons were learnt and noted for future events. Although not as many as in previous years, the quality of the items presented was of a very high standard.

By the time you read this newsletter the Presentation Dinner will be over and you will have heard who won the People's Choice and Woody of the Year along with Chris Reik winning the Trevor Peters Award.

It was good to see some old woodies members at the Exhibition. John Rodgers, Jack Sweeney and George Hurlstone (King George) all came for a visit.  
It is with sadness that we lost two members this year.

As this is the last President's report for the year, I wish you and your loved ones a Happy and Safe Christmas.

John Dann.

**It's that time of year again.**

**Your 2024 membership is due by the end of December 2023.**

**Our membership year is from 1<sup>st</sup> January to 31<sup>st</sup> December.**

**Your Yearly First Aid Familiarization is Due Also.**

**John Dann will do a First Aid talk on Friday 1<sup>st</sup> December at 10.00am.**

**Tuesday 5<sup>th</sup> December at 9.30am and Tuesday 9<sup>th</sup> January 2024 at 9.30am.**

**Lenore Whittaker will have her First Aid talk on Monday 11<sup>th</sup> December and**

**Monday 8<sup>th</sup> January 2024 commencing at 10.00am both days.**

All members must make themselves available for one of these days. The first aid talks **WILL NOT** be going on over three months as they have in previous years.

If you miss the official dates you will need to attend on the 1st Tuesday of the month along with new members.

Remember you can't attend the sheds if you haven't paid your yearly fee or completed your First Aid.

**Wearing of Name Badges When on the Premises.**

**This applies to any time, more particularly if it isn't your regular day at the club.**

This badge is worn for a reason. Everyone needs to know who you are.

The wearing of your badge is not a request but a requirement of being a club member.

Please don't leave it at home, in the car or say it is lost. If you lose it, purchase another.

## From Another Who Reads the Newsletter.

Thanks to **Brian Cole** for his contribution to the Shavings. Ed.



*Since completing the Beginner's Woodturning Course with Ivan Medew and Ian Trail in April 2022, I have had the best time honing my craft. From platters to lazy susans, to lidded bowls, I am growing in confidence all the time.*

*I love being a part of the club and I even love the challenge of when projects don't go quite as planned. I am so very grateful to all the members who have so graciously given of their time and knowledge over the past two years.*

*(My wife is also very grateful to the club for keeping me occupied and out of her hair).*

*Here are just a few of my works from the last year. Thanks again to all the members who have been so willing to share and help me grow. **Brian.***



## Box of the Month.

### Jacaranda and Red Cedar Jewellery Box.



*This box was made for our recent competition. I used the Jacaranda and Red Cedar timbers to get a contrasting effect. I also used New Guinea Rosewood in the lid panel where I carved a platypus.*

*There are two drawers in this box. The drawers and the top section have dividers to hold a variety of different size and types of jewellery.*

*This box was a challenge in that it required a variety of different and complex construction techniques. The fitting of the drawers and the shaping of the curved legs and a lid that overhangs the box was all a challenge. There are also curved shapes throughout the box.*

**Neils Andersen**

## Annual Awards Presentation and Christmas Dinner.

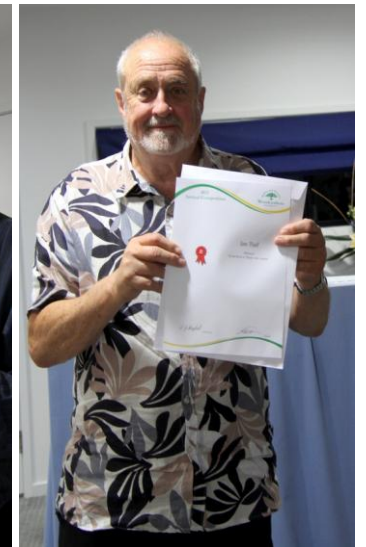
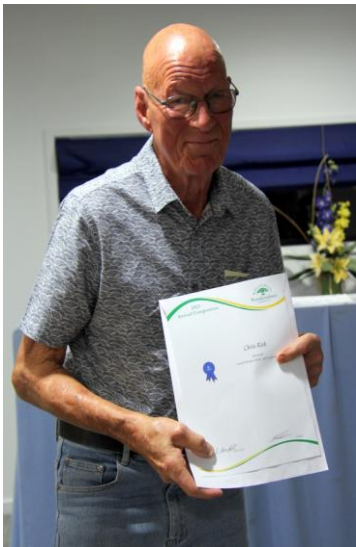
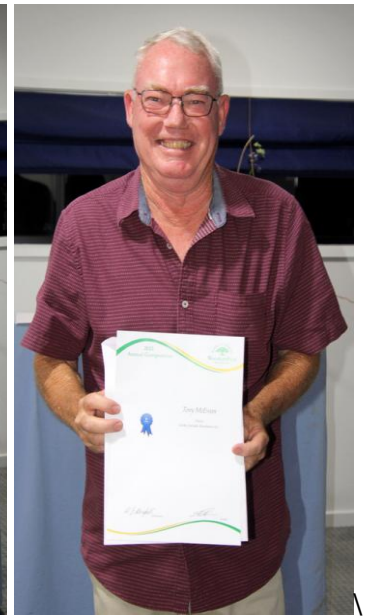
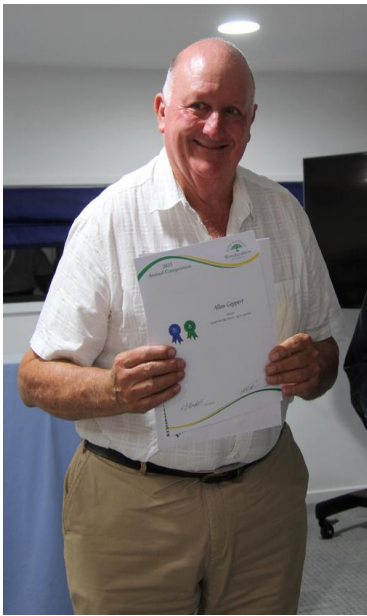
**Fewer** than fifty persons attended the dinner held this year at the Foley Street Retirement Village Clubhouse.



New table decorations were produced by **Chester Barker** though he and **Lorna** did not attend.

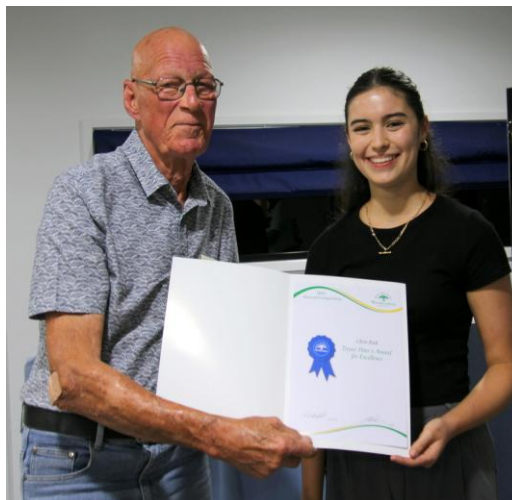
The caterers from "At Your Service" from Caboolture supplied a lovely tasty meal with generous helpings. The first course of a hot roast meal and salad with seconds if you wanted and Pavlova and Plum Pudding for sweets was well received by everyone. President John Dann kept procedures moving and most everyone had left by 8.15pm. The usual presentations of certificates took less time than in previous years, as only those at the dinner had their achievement read out as they received their awards.





I notice that Trev Spencer has the most colourful certificate.

Then there were the special awards. **Chris Riek** for having the overall highest points, **Chris Riek** again for winning the **Trevor Peters Award**. These were presented by Olivia who attended on behalf of Ali King. Ali also donated a basket of goodies for a lucky door prize.





There was still the **People's Choice** to announce and that went to **John Dann** for his large blanket box.

**Ray Jensen** does the tallying of the votes for the People's Choice and has submitted his report. Thank you Ray.



*Our annual Competition and Exhibition has been held again this year and going by the increased number of People's Choice voters, the Exhibition was better attended. Last year 1087 visitors participated. This year, 1387 votes, an increase of 300 or 27.5%.*

*There were fewer items entered in the Competition this year. Three of the top turners never submitted items through ill health and other reasons. I thought there were less Box Maker's entries than last year also.*

*The many exhibition items for display enabled the volunteers to achieve a great presentation for the club.*

The first six places of the PC votes were:

- |   |   |
|---|---|
| 1 <sup>st</sup> John Dann, Blanket Box/ Travel Trunk.                     | 2 <sup>nd</sup> Trevor Gaskell Mixed Birds. |
| 3 <sup>rd</sup> Trevor Gaskell. Huon Pine Natural Form.                   | 4 <sup>th</sup> Dave Clark Huon Pine Vase.  |
| 5 <sup>th</sup> Rick Desmeir Outback.(Outhouse)                           | 6 <sup>th</sup> Lyn Wymer Coffee Table.     |
| 6 <sup>th</sup> Ian Payne. Sailing Boat. A tie for 6 <sup>th</sup> place. |   |

**Congratulations John, your item won by over thirty votes.**

*One of John's admirers had some advice written on their ticket. "Would have been better with Iron straps."*

*He/she must have missed the bit about Woodcrafters. It would be remiss of me if I did not correct some misconceptions about Dave Clarke's magnificent vase. One, it was turned inside from the small existing hole, not a refitted top and colours in the wood were natural, not painted. Dave said the light brown colour may be a result of it being under water. Beautiful piece.*

*There are months of planning and hard work by the various committees and volunteers to bring about our big week in October and I am sure I can say, on behalf of club members, a big thank you to all concerned.*

*It is appreciated.*

Regards, **Ray Jensen.**

**There was a presentation to Ivan Medew of a framed certificate for his contribution to the club especially the years he put into the Competition and Exhibition.**

**Ivan will leave Queensland in February returning to Echuca in Victoria.**



**Editorial.** Although this is now the third year a combined Presentation and Christmas Event has been held and the tables have some Christmas decorations, I feel that it doesn't have that same jovial feel as the Christmas events that we had for many years when held at the Woodie's shed. It was during my time on the committee that I suggested this idea to combine the two but I believe it hasn't worked as a Christmas event but still has a definite vibe as the Presentation Dinner, especially as it is held in the month of November.

This is not just my thoughts but other members have voiced this opinion with me also.

With the caterers that are available to us, perhaps the club could consider returning to the sheds for an end of year lunchtime celebration from next year. The lack of any social activities/functions at the sheds has been a subject of some discussion and perhaps the new year would be a good time to revisit having social events. The last one we had was back in 2021. A lovely afternoon with singing, light refreshments, some raffles and a lovely time with our friends. This does not have to be the responsibility of the clubs formal committee but could be managed with a stand alone social club committee gathered from rank and file members, willing to contribute their time. No one would have to prepare food as we could use caterers.

I would be interested in what other club members think of this idea. **Anita (Editor).**

### **Around the Sheds.**

My thanks to **Ian Trail** for sending the photo of the rocking chair.

Thanks also to **Arthur Horsfall** for the photo of the table and the native gentleman. I see **Mike Power** is protecting the gentleman's dignity.



All three restoration jobs were done by the Project Team.



### **December Duty Officers.**

Monday 4<sup>th</sup> Ron Butterfield.

Thursday 14<sup>th</sup> Ian Trail.

**Monday 25<sup>th</sup> Christmas Day Sheds are closed.**

Thursday 7<sup>th</sup> Pauline Smith.

Monday 18<sup>th</sup> Andrew Wilmot.

Monday 11<sup>th</sup> Alan Wilson.

Thursday 21<sup>st</sup> John Arkinstall.

Thursday 28<sup>th</sup> John Westerhuis.

If you are unable to attend on your rostered day, please arrange your own swap.

**John Grubb.**

Witchety's Wood Works.

## Monthly General Meetings.

Meetings are another way to meet, catch up and get to know your woodies club members. Less than two hours a month and that includes your morning tea.

Meetings are held on the fourth (4<sup>th</sup>) Tuesday of the month commencing at **9.00am sharp**.

**Learn more about your club. At times there is a guest speaker and members are encouraged to bring "show and tell". This is your chance to show your good work and your mistakes and describe how you did it.**

**If you know of anyone that would be an interesting guest speaker please tell the committee.**

## The November General Meeting.

I would normally post a photo of the members at the meeting but as there were only 24 out of 219 members in attendance, I thought I would use the space for the photos of our guest speaker.

Tom is one of our recently newer members and was willing to share his knowledge with the club. This last month we had eight new members who we would have liked to have welcomed but none turned up.

Once again the meeting was over in the hour, then we spent an enjoyable thirty minutes or so hearing from **Tom Burnard** about his automata projects. If you missed it that's a big loss as it was very interesting, informative and something I would think most woodies would have an interest in.



I'm sure if you are interested, Tom would happily chat to you and there are several books on the subject.

Thanks Tom you were a great guest speaker. Ed.



**Des Wirges** has an interest in automata and produced two of his pieces he has made over the years.

Des is also a great turner and he had these three lovely turned Camphor Laurel bowls for show and tell. Des turned these as a thank you gift for the gentlemen who have provided the logs from the day hospital site.

### **Market Open Day.**

**Don't forget**, there will be an extra open day on **December 10<sup>th</sup>**.

A special for Christmas, with Santa arriving around 10.00am, with special gifts for the children.

**It might be nice if the stall holders decorated their tables.**

Our open day is on the **last Sunday** of each month unless otherwise stated.

If you require a table, contact **John Dann on 0415 237 167**.

Timber is being prepared and priced especially for sale to the public on the open day. If a member decides they would like some of that wood they are to pay the marked market price and not reprice it at member's rates. Members have a chance to buy their timber during the week.



**To those who read the Shavings.**

*Have a safe and happy Christmas break or just enjoy the holidays, whichever you prefer.*

*There will be an edition that closes on Christmas day 25<sup>th</sup> December, (yes one every month of the year) so if you have anything to send please do so.*

**The Shed will be closed on the official holidays, Christmas Day, Boxing Day and New Years Day. Ed.**

## A Special Recipe for the Twelve Days of Christmas.

### TURKEY TOMORROW!

On the **first** day of Christmas, my true love said to me,  
I've bought six fresh turkeys and a proper Christmas tree.

On the **second** day of Christmas, not a sound was heard,  
As we tucked into turkey, a most delicious bird.

On the **third** day of Christmas, came the people from next door,  
The turkey tasted just as good as it had the day before.

On the **fourth** day of Christmas, some wine and cheese we had,  
We were very bright and happy, the turkey a little sad.

On the **fifth** day of Christmas, outside the snowflakes scurried,  
But we were nice and warm inside, we had the turkey curried.

On the **sixth** day of Christmas, the Christmas spirit died,  
The children fought and bickered, we had the turkey fried.

On the **seventh** day of Christmas, my true love he did wince,  
When he sat down to table, and was offered turkey mince.

On the **eighth** day of Christmas, the dog had run for shelter,  
He'd seen our turkey pancakes and the glass of Alka-Seltzer.

On the **ninth** day of Christmas, by lunchtime dad was blotto,  
He knew the bird was back again, this time as a risotto.

On the **tenth** day of Christmas, we were drinking home-made brew,  
As if that wasn't bad enough, we were eating turkey stew.

On the **eleventh** day of Christmas, the Christmas tree was moulting,  
With chilli, soy and oyster sauce, the turkey was revolting.

On the **twelfth** day of Christmas, smiles were on our lips,  
The guests had all gone, the turkey too,

**We dined on fish and chips!**



**Our Thoughts are with All of You.**

To our Woodie members and mates who are not well  
and cannot be with us, we are thinking of you.



## **Notice to all members.**

Please remember, if you change your home address, email address and/or phone numbers (especially if you no longer have a landline) to notify the Member Recording Officer to have details changed on the membership list.

The Officer is Pauline Smith and her contact information is ph. 0407 375 491 or email [billpauline69@bigpond.com](mailto:billpauline69@bigpond.com)

**Members**, if your medical history has changed at all, don't forget to change the details on your paperwork located in the box in the first aid cupboard.

### **Facebook.**

Bribie and District Woodcrafters now have their own Facebook page. This is managed by **Chris Denlay**. Don't forget to tell your family and friends.

If you have anything you might like Chris to add to the page her email is [nikelady1@earthlink.net](mailto:nikelady1@earthlink.net)

### **Birthdays.**

To all members born in the month of **December** we wish you a very happy birthday.

May your day be filled with good wishes and much joy.

## **Photo of the Month.**

Should it be this one of a stunned, disbelieving Fred?



Or maybe this one?



**No this one of Fred deserves the Photo of the Month.**



Woodies groups need to work out their days away from the shed over the Christmas break. The shed will be closed on 25<sup>th</sup> and 26<sup>th</sup> December and the 1<sup>st</sup> January 2024.

The Pyrography group will have their last day on Tuesday 19<sup>th</sup> December and return on Tuesday 9<sup>th</sup> January.

## **Woodies Management and Committee Members at a Glance.**

Carol Baker	0434 334 592	<a href="mailto:secretary@bribiewoodies.org.au">secretary@bribiewoodies.org.au</a>
Sue Bowen	0414 293 446	<a href="mailto:smbowenau@yahoo.com.au">smbowenau@yahoo.com.au</a>
John Dann	0415 237 167	<a href="mailto:president@bribiewoodies.org.au">president@bribiewoodies.org.au</a>
Lorelle Green	0408 301 973	<a href="mailto:treasurer@bribiewoodies.org.au">treasurer@bribiewoodies.org.au</a>
John Grubb	0417 635 093	<a href="mailto:jlgrubby1@bigpond.com">jlgrubby1@bigpond.com</a>
John Westerhuis	0427 542 384	<a href="mailto:rocaran70@gmail.co">rocaran70@gmail.co</a>
Andrew Wilmot	0413 119 795	<a href="mailto:airedrew@gmail.com">airedrew@gmail.com</a>
Peter Wood	0428 745 129	<a href="mailto:peckonwood@gmail.com">peckonwood@gmail.com</a>

**Committee Meetings are held on the third (3<sup>rd</sup>) Tuesday each month at 8.00am sharp.  
General Meetings are held on the fourth (4<sup>th</sup>) Tuesday each month at 9.00am sharp.**

**Ken Hooper has resigned from the committee. Ken will still be at the club on his usual days.**



**Beware** of the lady with the camera. I am always looking for stories.  
**If I can't snap the photo I would be happy if you did.**

If you see something around the club or of interest anywhere that would be worthy of the newsletter, please send it and the story to me.

The Shavings isn't only about woodwork.

**When you send that story, please just send it as a **doc. or docx.** file and send photos as a separate **.jpg** file and not attached to the document.**

**If it isn't in these formats I cannot accept the story, as I am unable to edit in any other format.**

You can also text me a photo if your mobile phone is the only way you take your photos.

All stories welcome. Remember it isn't only about woodwork as some great stories have proven to be. *Anita* (Editor).

**Please send all items for publication in the Shavings directly to the Editor.**

The deadline for news items or any contributions is the

**25th of the month.**

Shavings Editor Anita McDicken.

[anitamcd@bigpond.com](mailto:anitamcd@bigpond.com) Phone 0409 612 175

## **DATE SAVERS.**

### **NOVEMBER 2023**

End of November .....Bribie Shavings December Issue.

### **DECEMBER 2023**

1st December .....First Aid talk. **1<sup>st</sup> for the year at 10.00am. See details in this edition of Shavings**

5<sup>th</sup> December ..... Orientation/First Aid Day. **Open to Members for their First Aid. 9.30am.**

**10th December .... A Christmas Open Day at the Club. A very special Santa visiting day.**

11<sup>th</sup> December..... First Aid talk. **By Lenore at 10.00am.**

19<sup>th</sup> December ..... Committee meeting.

**There isn't a General Meeting in December.**

**Woodie's groups to decide on their closure days over the Christmas break.**

**Monday 25<sup>th</sup> is Christmas Day and Tuesday 26<sup>th</sup> is BoxinDay Holiday.**

**The Sheds **will** be closed.**

End of December .....Bribie Shavings January Issue.

### **JANUARY 2024**

1st January .....**New Years Day Public Holiday the shed will be closed.**

2<sup>nd</sup> January ..... **NO Orientation/First Aid Day.**

8<sup>th</sup> January .....**First Aid talk. 10.00am First and last by Lenore in 2024. Please attend.**

9<sup>th</sup> January .....First Aid talk by John Dann 9.30am.

16<sup>th</sup> January .....Committee Meeting. **First for the new year.**

23<sup>rd</sup> January .....General Meeting. **Start the year by attending the meeting.**

28<sup>th</sup> January .....Open Market Day.

End of January.....Bribie Shavings February Issue.

### **FEBRUARY 2024**

6<sup>th</sup> February ..... Orientation/First Aid Day.

20<sup>th</sup> February ..... Committee Meeting.

25<sup>th</sup> February .....Open Market Day.

27<sup>th</sup> February .....General Meeting.

End of February.....Bribie Shavings March Issue.

### **MARCH 2024**

**This month is the Annual General Meeting.**